

TABLE OF CONTENTS

THIS PRICE LIST SUPERSEDES ALL PREVIOUS EDITIONS

GUNS

CYRANO.....	CHART N. 500.....	PAG.	2
STEN 2001.....	CHART N. 504.....	PAG.	4
JET.....	CHART N. 505.....	PAG.	6
INSTINCT LX/PRO/ONE/CARBON.....	CHART N. 509.....	PAG.	8
INSTINCT REEL.....	CHART N. 510.....	PAG.	10

ACCESSORIES

MASK.....	CHART N. 700	PAG.	13
-----------	--------------------	------	----

TOOL KITS

Speargun Tool Kit.....	PAG.	14
------------------------	------	----

SPEARGUN ACCESSORIES	PAG.	16
----------------------	------	----

CYRANO SPEARGUN

UPDATED: 30/05/1997

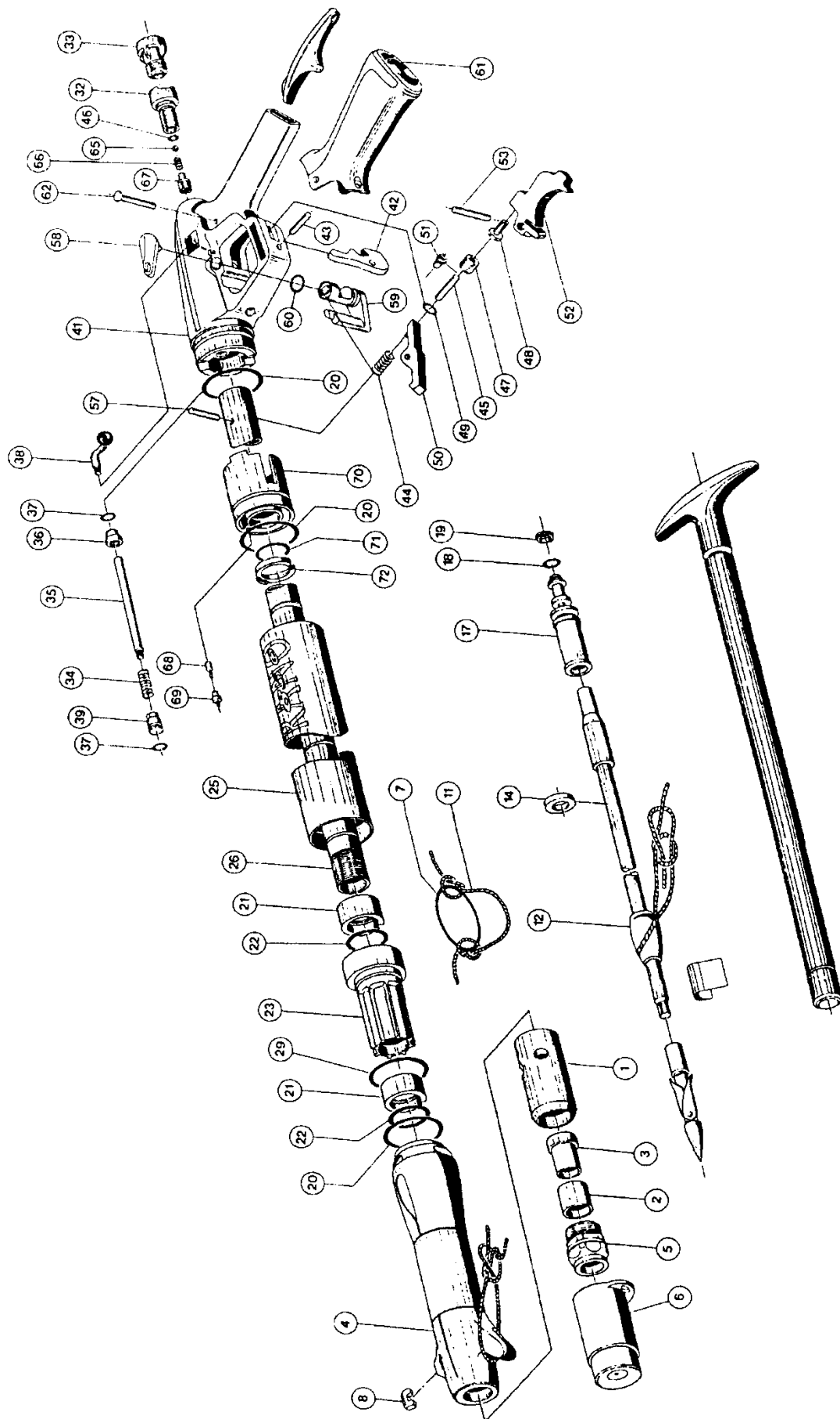


CHART No. 500		CYRANO SPEARGUN		REF. DRAWING: F 205	
				UPDATED: 09/01/2003	
REF	CODE	DESCRIPTION			
1	A				
2	43163856	SHOCK ABSORBER, SPEARGUN			
3	43164207	SHOCK ABSORBER INSERT			
4	43164200	NOSE CONE			
5	43164206	HEAD FERRULE			
6	43164008	PROTECTIVE CAP HEAD			
7	43163968	RUBBER O-RING			
8	43164201	VIEW FINDER			
11	43169821	SHOCK LINE, 3 MTS			
11	43169818	SHOCK LINE, 5 MTS			
12	43164004	LINE RETAINER			
14	43163503	WASHER DIA 7.2, CYRANO			
17	N				
18	46110107	OR 2031			
19	N				
20	46110208	OR SH 75 F SPECIAL			
21	43164204	BUSHING			
22	46110228	OR 3062			
23	43164202	NOSE CONE INSERT			
25	43164225	TANK CYRANO 550			
25	43164226	TANK CYRANO 700			
25	43164227	TANK CYRANO 850			
25	43164228	TANK CYRANO 970			
25	43164229	TANK CYRANO 1100			
26	43164215	BARREL CYRANO 550			
26	43164216	BARREL CYRANO 700			
26	43164217	BARREL CYRANO 850			
26	43164218	BARREL CYRANO 970			
26	43164219	BARREL CYRANO 1100			
29	46110245	OR 2106			
32	M				
33	43164223	CAP INLET VALVE			
34	L				
35	L				
36	L				
37	46110102	O-RING 2015			
38	43164234	SLIDER ASSY			
39	L				
41	H				
42	43163668	LINE RELEASE, SPEARGUN			
43	43163614	PIN, LINE RELEASE, SPEARGUN			

REF	CODE	DESCRIPTION			
44	43163313	SPRING CATCH HOOK			
45	43164282	CONNECTING PLUNGER 1,5 diameter			
46	46110201	OR R/1			
47	43164284	HOUSING CONNECTING PLUNGER			
48	E				
49	46110242	O-RING 2-003			
50	43163377	CATCH HOOK, SPEARGUN			
51	43164286	SPACING SLEEVE			
52	E				
53	43163337	PIN 4 X 23			
57	43163338	PIN 4 X 20			
58	43164237	SAFETY CATCH			
59	43164236	SAFETY BODY			
60	46110106	OR 106			
61	43164232	GUN HANDLE, SOFT, CYRANO			
62	43164233	PIN HANDLE			
65	M				
66	M				
67	M				
68	43163635	SEAT, ONE-WAY VALVE, SPEARGUN			
69	43163636	HOUSING, ONE-WAY VALVE, SPEARGUN			
70	D				
71	46110227	OR 3056			
72	43164212	CLIP 16 POWER REGULATOR			
		ASSEMBLIES			
A	43164210	HEAD ASSEMBLY (1-2-3-5)			
D	43164214	POWER REGULATOR ASSEMBLY (68-69-70)			
E	43164230	TRIGGER ASSEMBLY (48-52)			
H	43164287	HANDLE ASSEMBLY APNEA SYSTEM (38-41-42-43-47-49-51-58-59-60-L)			
L	43163937	POWER ADJUSTMENT ROD, SPGN (34-35-36-37-39)			
M	43164222	INLET VALVE ASSEMBLY, CYRANO (32-46-65-66-67)			
N	43164211	PISTON ASSEMBLY (17-18-19)			
***	43164290	COMPLETE SET OF O-RINGS (18-19-20-22-29-37-46-60-71)			
		NOTE			
		Starting from Serial No. 94336001, the Apnea System handle is assembled on the gun. Always use this Handle for repairs			

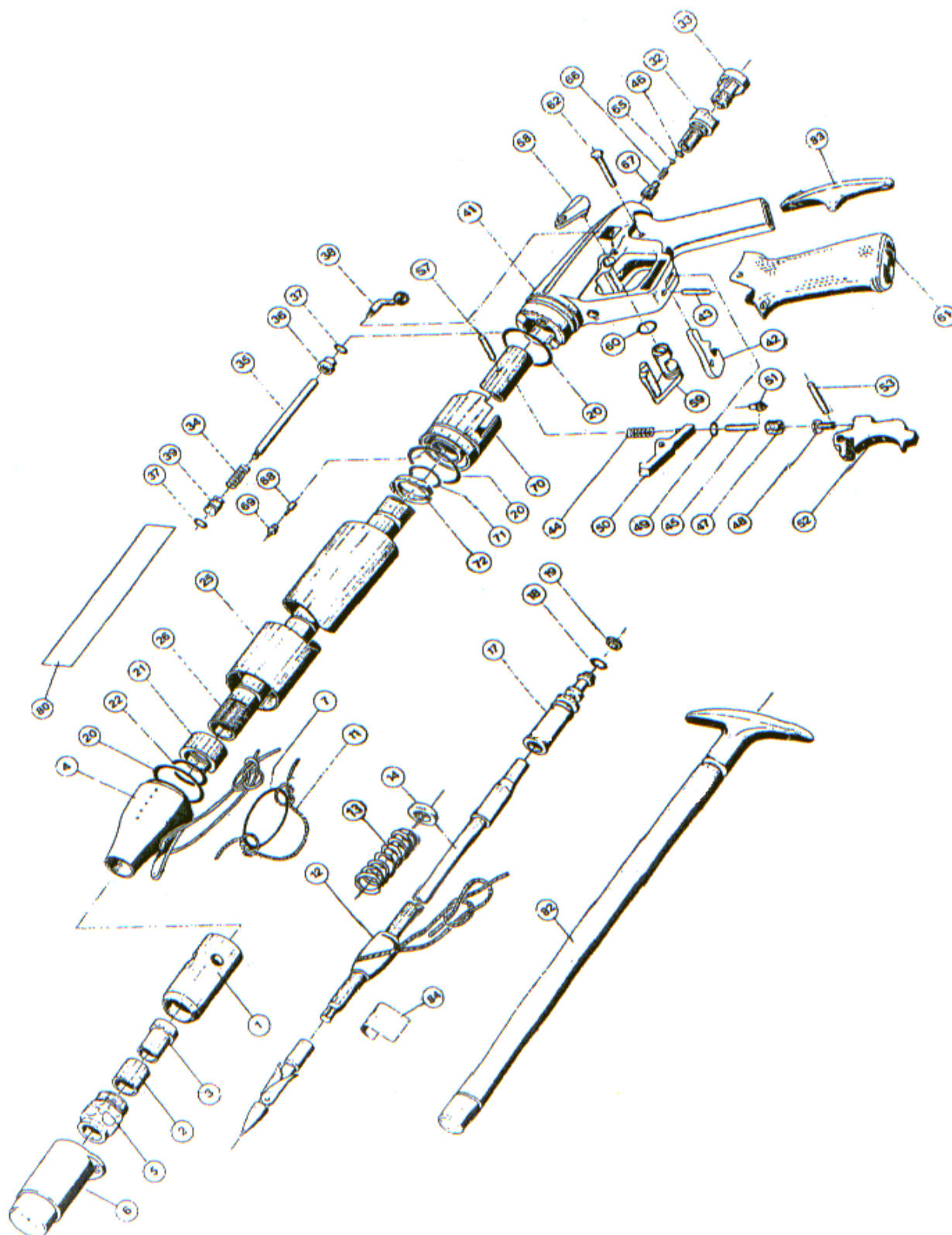


CHART No. 504		STEN 2001 SPEARGUN		REF. DRAWING: F 206	
				UPDATED: 15/01/2004	
REF	CODE	DESCRIPTION			
1	A				
2	43163856	SHOCK ABSORBER, SPEARGUN			
3	43163409	SHOCK ABSORBER INSERT, SPEARGUN			
4	43200093	NOSE CONE			
5	43164016	HEAD FERRULE			
6	43164008	PROTECTIVE CAP HEAD			
7	43163968	RUBBER O-RING			
11	43169821	SHOCK LINE, 3 MTS			
11	43169818	SHOCK LINE, 5 MTS			
12	43163355	LINE RETAINER, 8.5 MM SPEARGUN			
13	43163354	SHAFT SPRING, 8.5 MM I.D.SPEARGUN			
14	43163505	SHAFT WASHER, 8.2 MM D			
17	N				
18	46110110	O-RING 2037			
19	N				
20	46110208	OR SH 75 F SPECIAL			
21	43163665	BUSHING SPEARGUN STEN LINE			
22	46110206	OR 122 BIS			
25	43200069	TANK STEN MINIMINI 42			
25	43200070	TANK STEN MINI 58			
25	43200071	TANK STEN MEDI 70			
25	43200072	TANK STEN 84			
25	43200073	TANK SUPER STEN 100			
26	43200064	BARREL MINIMINISTEN 42			
26	43200057	BARREL MINISTEN 58			
26	43200059	BARREL MEDISTEN 70			
26	43200063	BARREL STEN 84			
26	43200061	BARREL SUPER STEN 100			
32	M				
33	43163563	CAP INLET VALVE WHITE			
34	L				
35	L				
36	L				
37	46110102	O-RING 2015			
38	43164234	SLIDER ASSY			
39	L				
41	H				
41	G				
42	43163668	LINE RELEASE, SPEARGUN			
43	43163614	PIN, LINE RELEASE, SPEARGUN			
44	43163313	SPRING CATCH HOOK			
45	43164282	CONNECTING PLUNGER 1,5 DIAMETER			
46	46110201	OR R/1			
47	43164284	HOUSING CONNECTING PLUNGER			
48	E				
49	46110242	O-RING 2-003			
50	43163377	CATCH HOOK, SPEARGUN			
51	43200095	PISTON BUSHING			
52	E				
53	43163337	PIN 4 X 23			
57	43200098	PIN 4X23,5			
58	43164237	SAFETY CATCH			
59	43164236	SAFETY BODY			
60	46110106	OR 106			
61	43163540	HANDLE			
62	43164233	PIN HANDLE			
65	M				
66	M				
67	M				
68	43163635	SEAT, ONE-WAY VALVE, SPEARGUN			
69	43163636	HOUSING, ONE-WAY VALVE, SPEARGUNN			
70	D				
71	46110220	OR 2062			
72	43163518	CIRCLIP, POWER REG., SPEARGUN			
80		Label Sten minimini			
80		Label Sten mini			
80		Label Sten medi			
80		Label Sten			
80		Label Super Sten			
83	43160710	SIMPLE SPEARGUN LOADER			
		ASSEMBLIES			
82	413806	AIR PUMP, SCREW CONNECTION			
A	43200066	HEAD ASSY (1-2-3-5)			
D	43163638	POWER REG.BLOCK ASSEMBLY (68-69-70)			
E	43164230	TRIGGER ASSEMBLY (48-52)			
G	43200097	HANDLE ASSY W/O POWER REGULATION			
		(41-42-43-47-49-51-58-59-60)			
H	43200096	HANDLE ASSY WITH POWER REGULATION			
		(38-41-42-43-47-49-51-58-59-60-L)			
L	43163937	POWER ADJUSTMENT ROD (34-35-36-37-39)			
M	43163941	INLET VALVE ASSEMBLY (32-46-65-66-67)			
N	43163629	PISTON ASSEMBLY (17-18-19)			
P	43163683	LEG SHEATH ASSEMBLY MINIMISTEN			
***	43163979	SET OF GASKETS, SPEARGUNS			
		(18-19-20-22-37-46-49-60-71)			

JET SPEARGUN

UPDATED: 01/06/2001

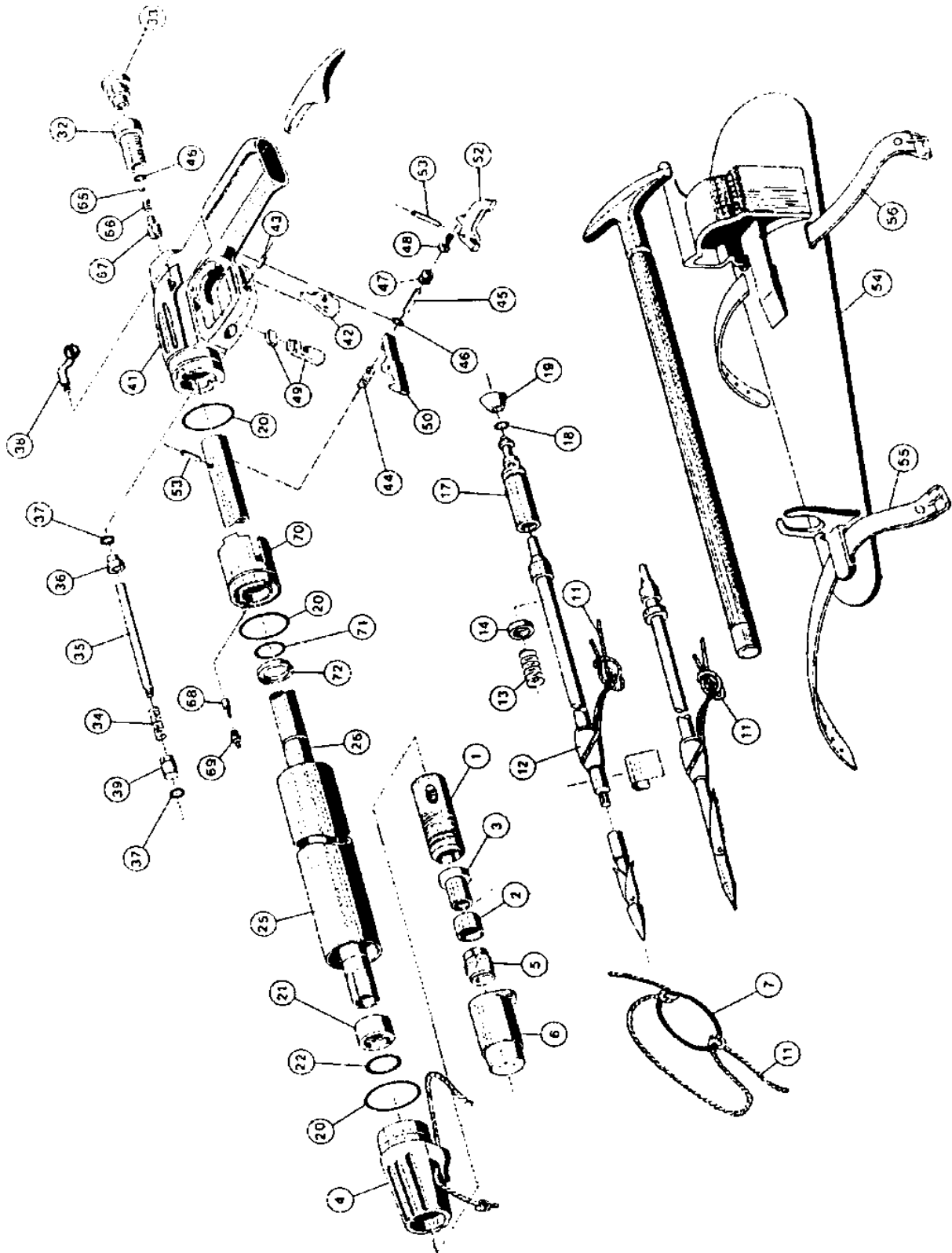


CHART No. 505	JET SPEARGUN	REF. DRAWING: F 207 UPDATED: 15/01/2004
------------------	---------------------	--

REF	CODE	DESCRIPTION
1	A	
2	43163856	SHOCK ABSORBER, SPEARGUN
3	43163409	SHOCK ABSORBER INSERT, SPEARGUN
4	43164101	NOSE CONE BLUE
5	43164102	HEAD FERRULE
6	43164138	PROTECTIVE CAP HEAD Blue
7	43163968	RUBBER O-RING
11	43169821	SHOCK LINE, 3 MTS
11	43169818	SHOCK LINE, 5 MTS
12	43163355	LINE RETAINER, 8.5 MM SPEARGUN
13	43163354	SHAFT SPRING, 8.5 MM I.D.SPEARGUN
14	43163505	SHAFT WASHER, 8.2 MM D
17	N	
18	46110110	O-RING 2037
19	N	
20	46110208	OR SH 75 F SPECIAL
21	43163665	BUSHING SPEARGUN
22	46110206	OR 122 BIS
25	43164113	TANK JET 42
25	43164114	TANK JET 58
25	43164115	TANK JET 70
26	43163362	BARREL JET 42
26	43163361	BARREL JET 58
26	43163639	BARREL JET 70
32	M	
33	43164159	CAP INLET VALVE ORANGE
34	L	
35	L	
36	L	
37	46110102	O-RING 2015
38	L	
38	L	
39	L	
41	H	
41	G	
42	43163613	LINE RELEASE BLACK
43	43163614	PIN, LINE RELEASE, SPEARGUN

REF	CODE	DESCRIPTION
44	43163313	SPRING CATCH HOOK
45	43163344	CONNECTING PLUNGER
46	46110201	OR R/1
47	43164024	HOUSING CONNECTING PLUNGER
48	E	
49	43164150	SAFETY CATCH, ORANGE
50	43163377	CATCH HOOK, SPEARGUN
52	E	
53	43163337	PIN 4 X 23
54	P	
55	P	
56	P	
65	M	
66	M	
67	M	
68	43163635	SEAT, ONE-WAY VALVE, SPEARGUN
69	43163636	HOUSING, ONE-WAY VALVE, SPEARGUN
70	D	
71	46110220	OR 2062
72	43163518	CIRCLIP, POWER REGULATOR
		ASSEMBLIES
A	43164103	HEAD ASSEMBLY BLUE (1-2-3-5)
D	43163638	POWER REGULATOR ASSEMBLY (68-69-70)
E	43163612	TRIGGER ASSEMBLY (48-52)
G	43164153	HANDLE ASSEMBLY W/O POWER ADJUSTMENT BL.
		(41-42-43-46-47-49)
H	43164155	HANDLE ASSY.W/POWER ADJUST STEN BLUE
		(L- 38-41-42-43-46-47-49)
L	43163937	POWER ADJUSTMENT ROD. SPGN (34-35-36-37-39)
M	43163941	INLET VALVE ASSEMBLY (32-46-65-66-67)
N	43163629	PISTON ASSEMBLY (17-18-19)
P	43163683	LEG SHEATH ASSEMBLY JET 42
***	43163979	COMPLETE SET OF O-RINGS
		(18-19-20-22-37-46-71)

DRAWING
No. F259

INSTINCT SLING GUN

UPDATED: 26/11/2004

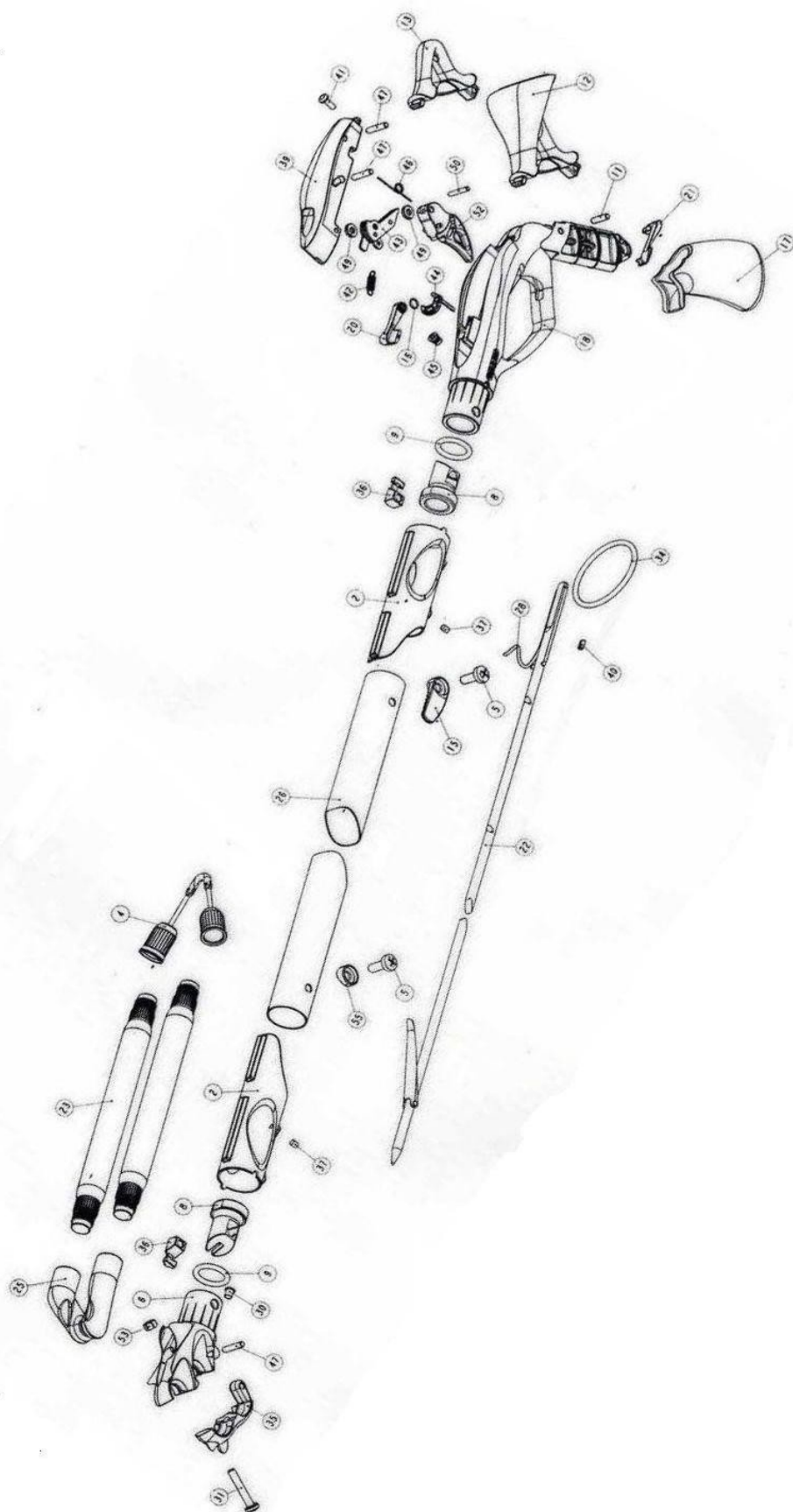


CHART
N.o 509

**INSTINCT SLING GUN
CARBON-LX-PRO-ONE**

REF. DRAWING : F 259
UPDATED : 10/01/2005

REF	CODE	DESCRIPTION
2	43200180	SHAFT GUIDE
4	43165503	NOSECONE (one)
4	43165505	ARTICULATED NOSE CONE
5	43200171	SCREW
6	43200220	HEAD UPPER PART
8	43200194	O-RING SEAT
9	43200169	OR 4075
11	43200223	PIN D4 L24 LNG
12	43200188	LOADING SUPPORT
13	43200187	REAR SUPPORT (one)
15	43200179	LINE RETAINER
16	43200170	OR 6 X 1
17	43200186	HANDLE COVER
18	43200184	HANDLE
20	43200189	SAFETY RIGHT
21	43200190	SAFETY LEFT
22	X X X	
23	X X X	
25	43200222	RING NUT SLING
26	X X X	
28	X X X	
30	43200183	GUIDE LINE
31	43200173	SCREW 5 X 30
34	43163968	RUBBER RING
35	43200221	HEAD LOWER PART
36	43200195	CONICAL INSERT

REF	CODE	DESCRIPTION
37	43200181	DOWEL
39	X X X	
40	43165034	LINE RETAINER
41	45111001	SCREW 9 X 13
42	X X X	
43		
44	43200192	LINE RELEASE
45	47158713	INSERT M4
46	X X X	
47	X X X	
49	X X X	
50	X X X	
52	X X X	
53	43200177	NUT INOX M5
55	43200178	WASHER
		ASSEMBLIES
A	43200253	HANDLE ASSY
		(C-8-9-11-12-13-17-18-20-21-36-41-44-45)
B	43200254	HEAD ASSY
		(6-8-9-25-30-31-35-36-47-53)
C	43200252	TRIGGER MECHANISM ASSY
		(39-42-43-46-47-49-50-52)

DRAWING
N.o F 260

INSTINCT REEL

UPDATED: 26/11/2004

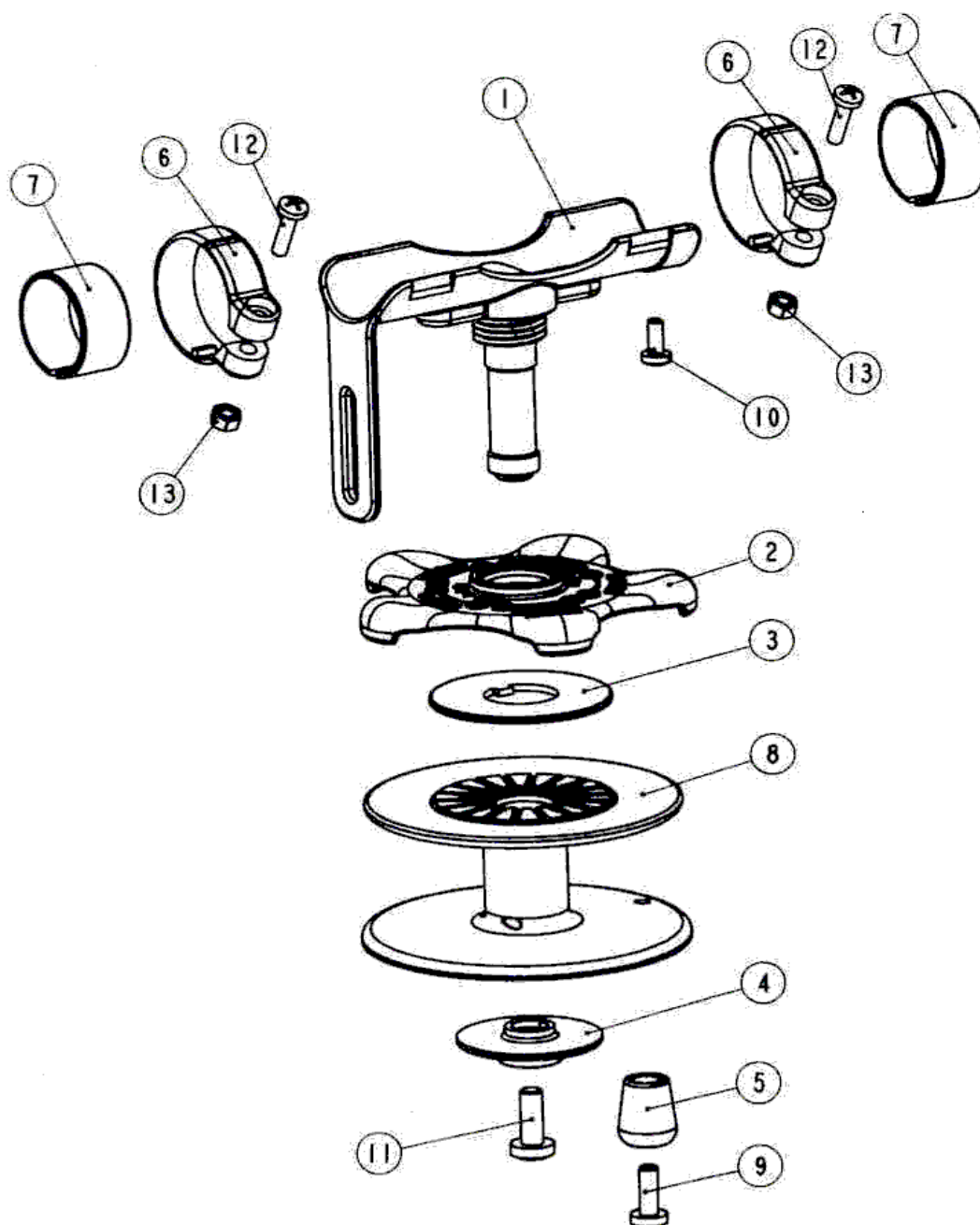


CHART
N.o 510

INSTINCT REEL

REF. DRAWING: F 260

UPDATED: 10/01/2005

REF	CODE	DESCRIPTION	REF	CODE	DESCRIPTION
1	43200196	BRACKET	8	43200203	REEL
2	43200197	FRICTION CLUTCH	9	43200174	SCREW INOX 5X14
3	43200198	CLUTCH WASHER	10	43200175	SCREW INOX 4X10
4	43200199	STOP WASHER	11	43200172	SCREW INOX 6X16
5	43200200	KNOB	12	43200176	SCREW INOX 4X16
6	43200201	CLAMP RING	13	43165481	NUT INOX M4
7	43200202	SPACER RING			

--

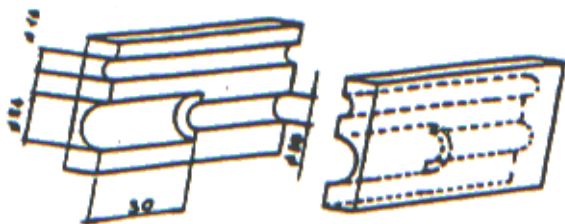
CHART No. 700	MASKS	UPDATED : 10/01/2005
---------------	-------	----------------------

		COMFORT	SAMURAI ELITE	SAMURAI	STAR	STAR ELITE
	Codice	421011	421000	421003	421009	421000
Buckle kit, Target	41200204		X	X		
Mask strap, silicone black	41200136	X			X	X

TOOL KIT for SPEARGUN

Code 413850

Head/barrel clamp jaws



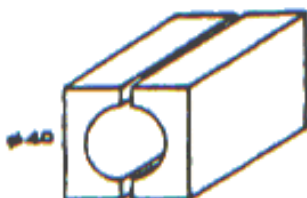
(A-1)
Code 43106101

O Ring fitting cone
(connecting plunger STEN - CYRANO)



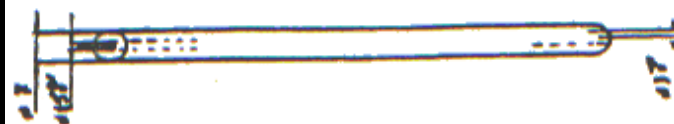
(A-12)
Code 43106112

Tank clamp jaws



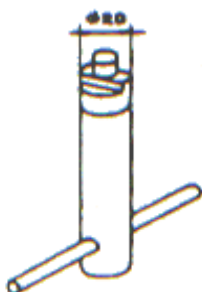
(A-3)
Code 43106103

Connecting plunger positioning rod



(A-13)
Code 43106113

Valve disassembling wrench



(A-4)
Code 43106104

Piston body



(A-16)
Code 43163608
Code 43164209

Plastic insert tool, barrel
CYRANO



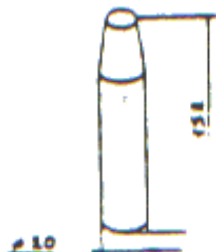
(A-7)
Code 43106107

Handle assembling tool



(A-18)
Code 43106118

O Ring assembling cone



(A-9)
Code 43106109

Plunger grub screw



(A-22)
Code 43106122

43163351
43164278

SPEARGUNS
SHAFT TANG, 9 MM D., SPEARGUN
SHAFT TANG D. 7 STAINLESS STEEL