

# TABLE OF CONTENTS

THIS SPARE PARTS LIST SUPERSEDES ALL PREVIOUS EDITIONS

## SPEARGUNS

CYRANO.....	PAG.	2
SPARK MIMETIC.....	PAG.	3
STEN 2001.....	PAG.	4
JET.....	PAG.	5
INSTINCT GT/PRO/CARBON.....	PAG.	6
PHANTOM.....	PAG.	7
INSTINCT REEL.....	PAG.	8

## MASKS

Masks.....	PAG.	9
------------	------	---

## TOOL KITS

Speargun Tool Kit .....	PAG.	10
-------------------------	------	----

## ACCESSORIES

.....	PAG.	11
-------	------	----

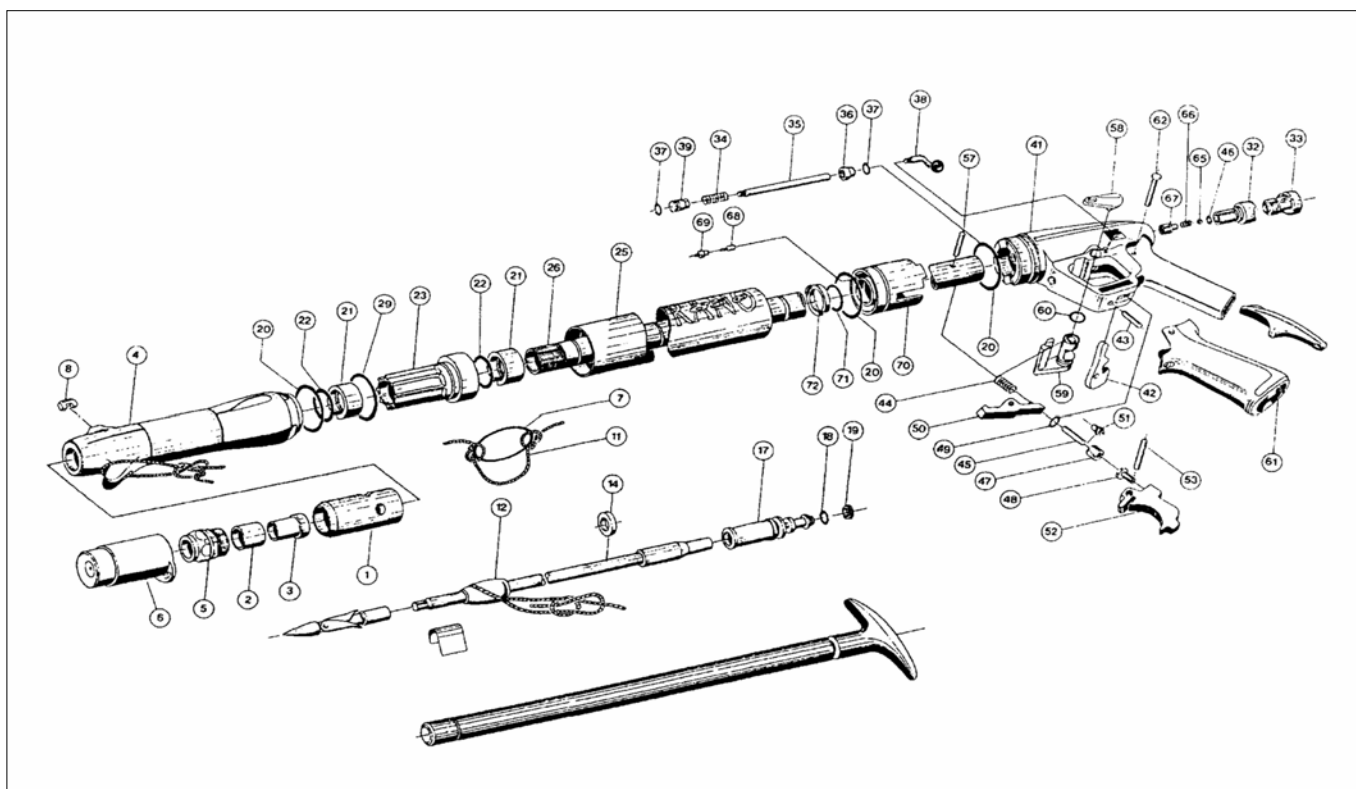
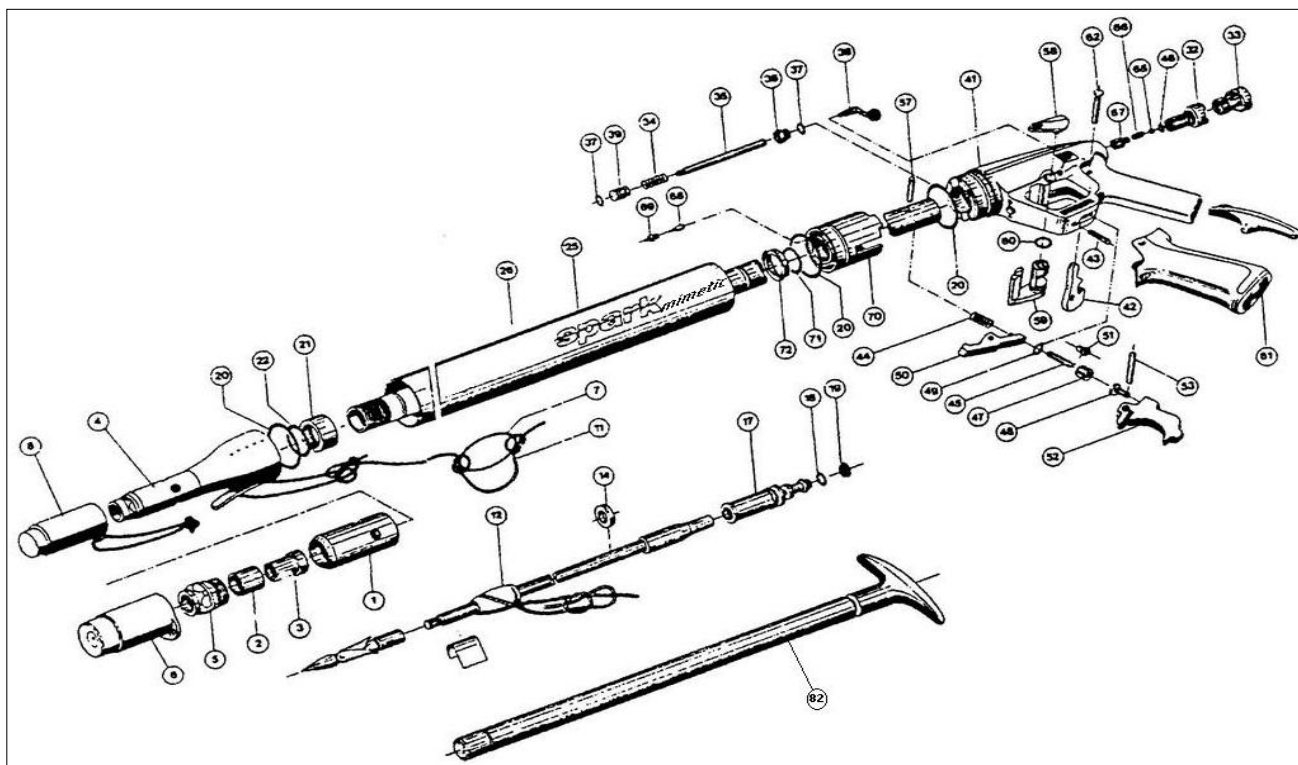


CHART NO. 500		CYRANO SPEARGUN	UPDATED : 10/01/2008		
REF	CODE	DESCRIPTION	REF	CODE	DESCRIPTION
1	A		44	43163313	SPRING CATCH HOOK
2	43163856	SHOCK ABSORBER, SPEARGUN	45	43164282	CONNECTING PLUNGER 1,5 diameter
3	43164207	SHOCK ABSORBER INSERT	46	46110201	OR R/1
4	43164200	NOSE CONE	47	43164284	HOUSING CONNECTING PLUNGER
5	43164206	HEAD FERRULE	48	E	
6	43164008	PROTECTIVE CAP HEAD	49	46110242	O-RING 2-003
7	43163968	RUBBER O-RING	50	43163377	CATCH HOOK, SPEARGUN
8	43164201	VIEW FINDER	51	43164286	SPACING SLEEVE
11	43169821	SHOCK LINE, 3 MTS	52	E	
11	43169818	SHOCK LINE, 5 MTS	53	43163337	PIN 4 X 23
12	43164004	LINE RETAINER	57	43163338	PIN 4 X 20
14	43163503	WASHER DIA 7.2, CYRANO	58	43164237	SAFETY CATCH
17	N		59	43164236	SAFETY BODY
18	46110107	OR 2031	60	46110106	OR 106
19	N		61	43164232	GUN HANDLE, SOFT, CYRANO
20	46110208	OR SH 75 F SPECIAL	62	43164233	PIN HANDLE
21	43164204	BUSHING	65	M	
22	46110228	OR 3062	66	M	
23	43164202	NOSE CONE INSERT	67	M	
25	43164225	TANK CYRANO 550	68	43163635	SEAT, ONE-WAY VALVE, SPEARGUN
25	43164226	TANK CYRANO 700	69	43163636	HOUSING, ONE-WAY VALVE, SPEARGUN
25	43164227	TANK CYRANO 850	70	D	
25	43164228	TANK CYRANO 970	71	46110227	OR 3056
25	43164229	TANK CYRANO 1100	72	43164212	CLIP 16 POWER REGULATOR
26	43164215	BARREL CYRANO 550			
26	43164216	BARREL CYRANO 700			ASSEMBLIES
26	43164217	BARREL CYRANO 850			
26	43164218	BARREL CYRANO 970	A	43164210	HEAD ASSEMBLY (1-2-3-5)
26	43164219	BARREL CYRANO 1100	D	43164214	POWER REGULATOR ASSEMBLY (68-69-70)
29	46110245	OR 2106	E	43164230	TRIGGER ASSEMBLY (48-52)
32	M		H	43164287	HANDLE ASSEMBLY APNEA SYSTEM
33	43164223	CAP INLET VALVE			(38-41-42-43-47-49-51-58-59-60-L )
34	L		L	43163937	POWER ADJUSTMENT ROD, SPGN (34-35-36-37-39)
35	L		M	43164222	INLET VALVE ASSEMBLY, CYRANO (32-46-65-66-67)
36	L		N	43164211	PISTON ASSEMBLY (17-18-19)
37	46110102	O-RING 2015	***	43164290	COMPLETE SET OF O-RINGS
38	43164234	SLIDER ASSY			( 18-19-20-22-29-37-46-60-71)
39	L				NOTE
41	H				Starting from Serial No. 94336001, the Apnea System handle is assembled on the gun. Always use this Handle for repairs
42	43163668	LINE RELEASE, SPEARGUN			
43	43163614	PIN. LINE RELEASE. SPEARGUN			



REF.	CODE	DESCRIPTION
1	A	
2	43163856	SHOCK ABSORBER, SPEARGUN
3	43164207	SHOCK ABSORBER INSERT
4	43164301	NOSE CONE
5	A	
6	43164008	PROTECTIVE CAP HEAD
7	43163968	RUBBER O-RING
11	43169821	SHOCK LINE, 3 MTS
11	43169818	SHOCK LINE, 5 MTS
12	43164004	LINE RETAINER
14	43163503	WASHER DIA 7,2,
17	N	
18	46110107	OR 2031
19	N	
20	46110208	OR SH 75 F SPECIAL
21	43164204	BUSHING
22	46110228	OR 3062
25	43200050	TANK STEALTH 420
25	43164302	TANK STEALTH 550
25	43164303	TANK STEALTH 700
25	43164304	TANK STEALTH 850
25	43164305	TANK STEALTH 970
25	43164306	TANK STEALTH 1100
26	43163560	BARREL STEALTH 420
26	43164215	BARREL STEALTH 550
26	43164216	BARREL STEALTH 700
26	43164217	BARREL STEALTH 850
26	43164218	BARREL STEALTH 970
26	43164219	BARREL STEALTH 1100
32	M	
33	43163563	WHITE CAP INLET VALVE
34	L	
35	L	
36	L	
37	46110102	O-RING 2015
38	L	
39	L	
41	H	
42	43163668	LINE RELEASE, SPEARGUN
43	43163614	PIN, LINE RELEASE, SPEARGUN
44	43163313	SPRING CATCH HOOK
45	43164282	CONNECTING PLUNGER 1,5

REF.	CODE	DESCRIPTION
46	46110201	OR R/1
47	43164284	HOUSING CONNECTING PLUNGER
48	E	
49	46110242	O-RING 2-003
50	43163377	CATCH HOOK, SPEARGUN
51	43164286	SPACING SLEEVE APNEA SYSTEM
52	E	
53	43163337	PIN 4 X 23
57	43163338	PIN 4 X 20
58	43163539	SAFETY STOP
59	43163538	SAFETY BODY
60	46110106	OR 106
61	43163540	HANDLE COVER
62	43164233	PIN HANDLE
65	43163808	BALL BEARING INLET VALVE
66	43163807	SPRING, INLET VALVE SPEARGUN
67	43164220	BUSHING INLET VALVE
68	43163635	SEAT, ONE-WAY VALVE, SPEARGUN
69	43163636	HOUSING, ONE-WAY VALVE, SPEARGUN
70	D	
71	46110227	OR 3056
72	43164212	CLIP 16 POWER REGULATOR
		<b>ASSEMBLIES</b>
A	43164210	HEAD ASSY (1-2-3-5)
D	43164214	POWER REGULATOR ASSEMBLY (68-69-70)
E	43164230	TRIGGER ASSY STEALTH (48-52)
H	43200033	HANDLE ASSY W/REG. STEALTH SPRGN (38-41-42-43-46-47-61- L)
H	43163561	HANDLE ASSY STEALTH (38-41-42-43-46-47-61)
L	43163937	POWER ADJUSTMENT ASSY (34-35-36-37-39)
M	43164222	INLET VALVE ASSY (32-46-65-66-67)
N	43164211	PISTON ASSY (17-18-19)
***	43164290	COMPLETE SET OF O-RINGS ( 18-19-20-22-37-46-49-60-71)

DRAWING NO. F 206	<b>STEN 2001 SPEARGUN</b>	UPDATED: 15/01/2004
-------------------	---------------------------	---------------------

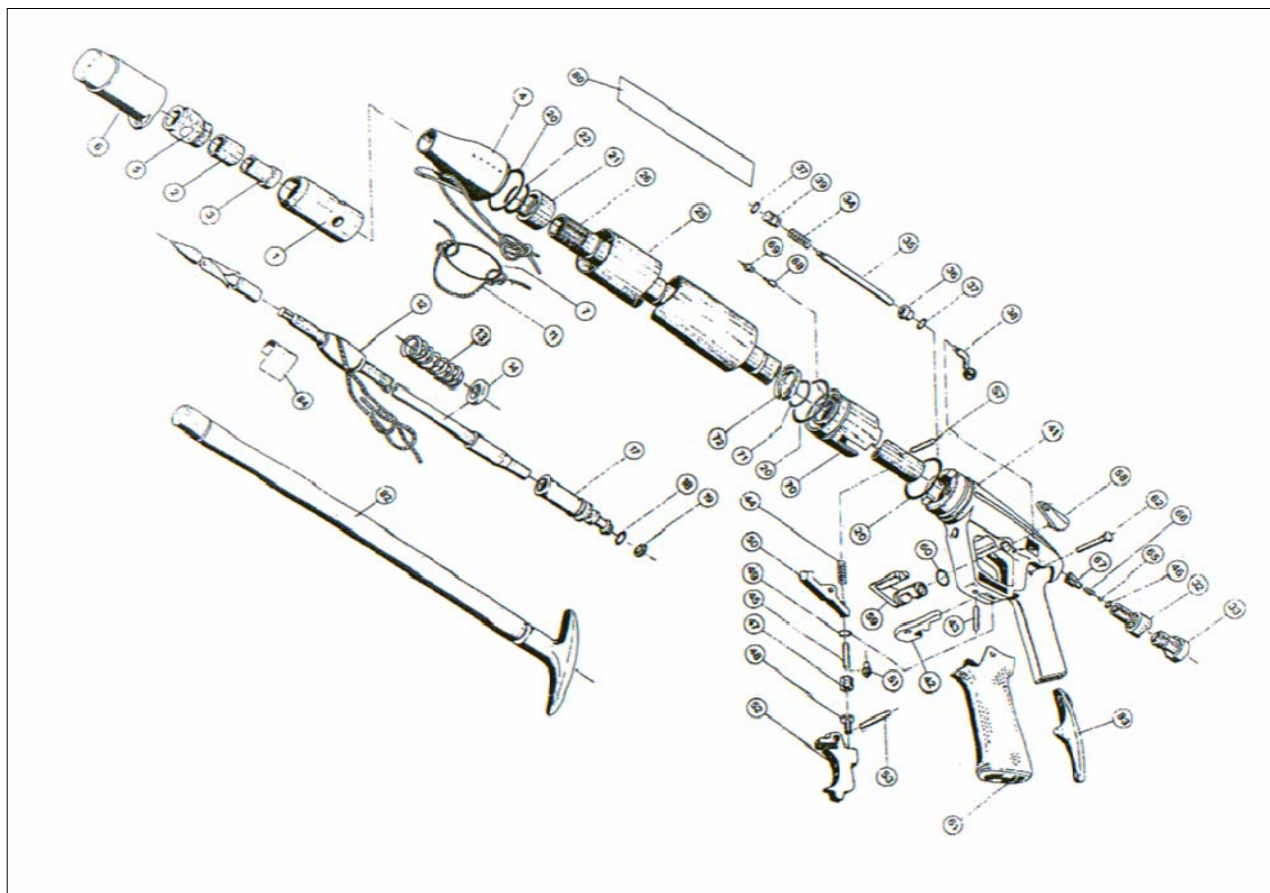
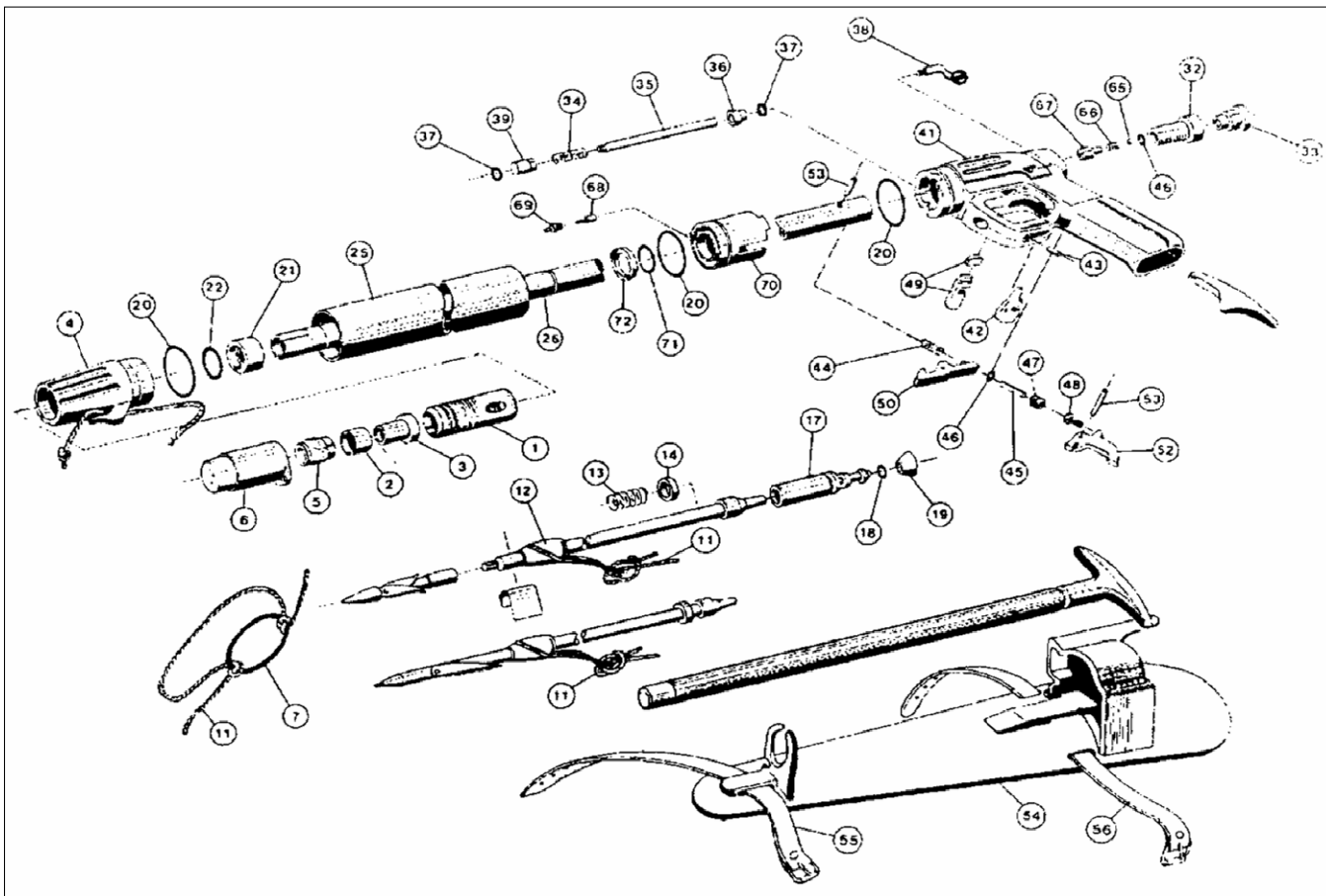


CHART NO. 504		STEN 2001 SPEARGUN		UPDATED: 15/01/2004			
REF	CODE	DESCRIPTION		REF	CODE	DESCRIPTION	
1	A			44	43163313	SPRING CATCH HOOK	
2	43163856	SHOCK ABSORBER, SPEARGUN		45	43164282	CONNECTING PLUNGER 1,5 DIAMETER	
3	43163409	SHOCK ABSORBER INSERT, SPEARGUN		46	46110201	OR R/1	
4	43200093	NOSE CONE		47	43164284	HOUSING CONNECTING PLUNGER	
5	43164016	HEAD FERRULE		48	E		
6	43164008	PROTECTIVE CAP HEAD		49	46110242	O-RING 2-003	
7	43163968	RUBBER O-RING		50	43163377	CATCH HOOK, SPEARGUN	
11	43169821	SHOCK LINE, 3 MTS		51	43200095	PISTON BUSHING	
11	43169818	SHOCK LINE, 5 MTS		52	E		
12	43163355	LINE RETAINER, 8,5 MM SPEARGUN		53	43163337	PIN 4 X 23	
13	43163354	SHAFT SPRING, 8,5 MM I.D.SPEARGUN		57	43200098	PIN 4X23,5	
14	43163505	SHAFT WASHER, 8,2 MM D		58	43164237	SAFETY CATCH	
17	N			59	43164236	SAFETY BODY	
18	46110110	O-RING 2037		60	46110106	OR 106	
19	N			61	43163540	HANDLE	
20	46110208	OR SH 75 F SPECIAL		62	43164233	PIN HANDLE	
21	43163665	BUSHING SPEARGUN STEN LINE		65	M		
22	46110206	OR 122 BIS		66	M		
25	43200069	TANK STEN MINIMINI 42		67	M		
25	43200070	TANK STEN MINI 58		68	43163635	SEAT, ONE-WAY VALVE, SPEARGUN	
25	43200071	TANK STEN MEDI 70		69	43163636	HOUSING, ONE-WAY VALVE, SPEARGUNN	
25	43200072	TANK STEN 84		70	D		
25	43200073	TANK SUPER STEN 100		71	46110220	OR 2062	
26	43200064	BARREL MINIMINISTEN 42		72	43163518	CIRCLIP, POWER REG., SPEARGUN	
26	43200057	BARREL MINISTEN 58		83	43160710	SIMPLE SPEARGUN LOADER	
26	43200059	BARREL MEDISTEN 70		ASSEMBLIES			
26	43200063	BARREL STEN 84		82	413806	AIR PUMP, SCREW CONNECTION	
26	43200061	BARREL SUPER STEN 100		A	43200066	HEAD ASSY ( 1-2-3-5 )	
32	M			D	43163638	POWER REG.BLOCK ASSEMBLY ( 68-69-70 )	
33	43163563	CAP INLET VALVE WHITE		E	43164230	TRIGGER ASSEMBLY (48-52)	
34	L			G	43200097	HANDLE ASSY W/O POWER REGULATION (41-42-43-47-49-51-58-59-60)	
35	L					HANDLE ASSY WITH POWER REGULATION (38-41-42-43-47-49-51-58-59-60-L )	
36	L			H	43200096		
37	46110102	O-RING 2015					
38	43164234	SLIDER ASSY		L	43163937	POWER ADJUSTMENT ROD ( 34-35-36-37-39 )	
39	L			M	43163941	INLET VALVE ASSEMBLY ( 32-46-65-66-67 )	
41	H			N	43163629	PISTON ASSEMBLY ( 17-18-19 )	
41	G			P	43163683	LEG SHEATH ASSEMBLY MINIMISTEN	
42	43163668	LINE RELEASE, SPEARGUN		***	43163979	SET OF GASKETS, SPEARGUNS ( 18-19-20-22-37-46-49-60-71 )	
43	43163614	PIN, LINE RELEASE, SPEARGUN					



REF	CODE	DESCRIPTION
1	A	
2	43163856	SHOCK ABSORBER, SPEARGUN
3	43163409	SHOCK ABSORBER INSERT, SPEARGUN
4	43164101	NOSE CONE BLUE
5	43164102	HEAD FERRULE
6	43164138	PROTECTIVE CAP HEAD Blue
7	43163968	RUBBER O-RING
11	43169821	SHOCK LINE, 3 MTS
11	43169818	SHOCK LINE, 5 MTS
12	43163355	LINE RETAINER, 8.5 MM SPEARGUN
13	43163354	SHAFT SPRING, 8.5 MM I.D.SPEARGUN
14	43163505	SHAFT WASHER, 8.2 MM D
17	N	
18	46110110	O-RING 2037
19	N	
20	46110208	OR SH 75 F SPECIAL
21	43163665	BUSHING SPEARGUN
22	46110206	OR 122 BIS
25	43164113	TANK JET 42
25	43164114	TANK JET 58
25	43164115	TANK JET 70
26	43163362	BARREL JET 42
26	43163361	BARREL JET 58
26	43163639	BARREL JET 70
32	M	
33	43164159	CAP INLET VALVE ORANGE
34	L	
35	L	
36	L	
37	46110102	O-RING 2015
38	L	
38	L	
39	L	
41	H	
41	G	
42	43163613	LINE RELEASE BLACK

REF	CODE	DESCRIPTION
43	43163614	PIN, LINE RELEASE, SPEARGUN
44	43163313	SPRING CATCH HOOK
45	43163344	CONNECTING PLUNGER
46	46110201	OR R/1
47	43164024	HOUSING CONNECTING PLUNGER
48	E	
49	43164150	SAFETY CATCH, ORANGE
50	43163377	CATCH HOOK, SPEARGUN
52	E	
53	43163337	PIN 4 X 23
54	P	
55	P	
56	P	
65	M	
66	M	
67	M	
68	43163635	SEAT, ONE-WAY VALVE, SPEARGUN
69	43163636	HOUSING, ONE-WAY VALVE, SPEARGUN
70	D	
71	46110220	OR 2062
72	43163518	CIRCLIP, POWER REGULATOR
<b>ASSEMBLIES</b>		
A	43164103	HEAD ASSEMBLY BLUE (1-2-3-5)
D	43163638	POWER REGULATOR ASSEMBLY (68-69-70)
E	43163612	TRIGGER ASSEMBLY (48-52)
G	43164153	HANDLE ASSEMBLY W/O POWER ADJUSTMENT BL. (41-42-43-46-47-49)
H	43164155	HANDLE ASSY.W/POWER ADJUST STEN BLUE (L- 38-41-42-43-46-47-49)
L	43163937	POWER ADJUSTMENT ROD, SPGN (34-35-36-37-39)
M	43163941	INLET VALVE ASSEMBLY (32-46-65-66-67)
N	43163629	PISTON ASSEMBLY (17-18-19)
P	43163683	LEG SHEATH ASSEMBLY JET 42
***	43163979	COMPLETE SET OF O-RINGS (18-19-20-22-37-46-71)

DRAWING NO. F 259	INSTINCT SLING GUN	UPDATED : 22/01/2007
-------------------	--------------------	----------------------

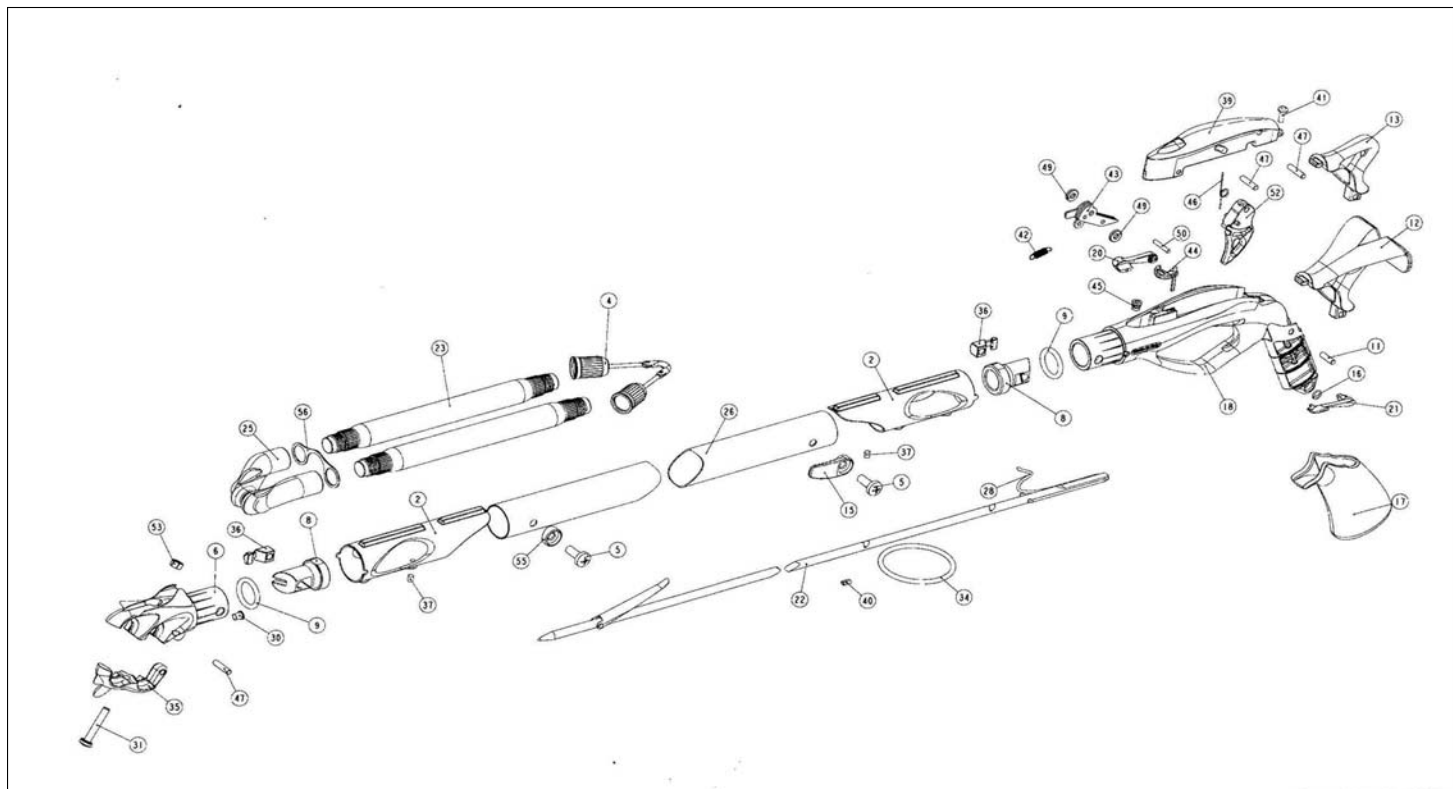
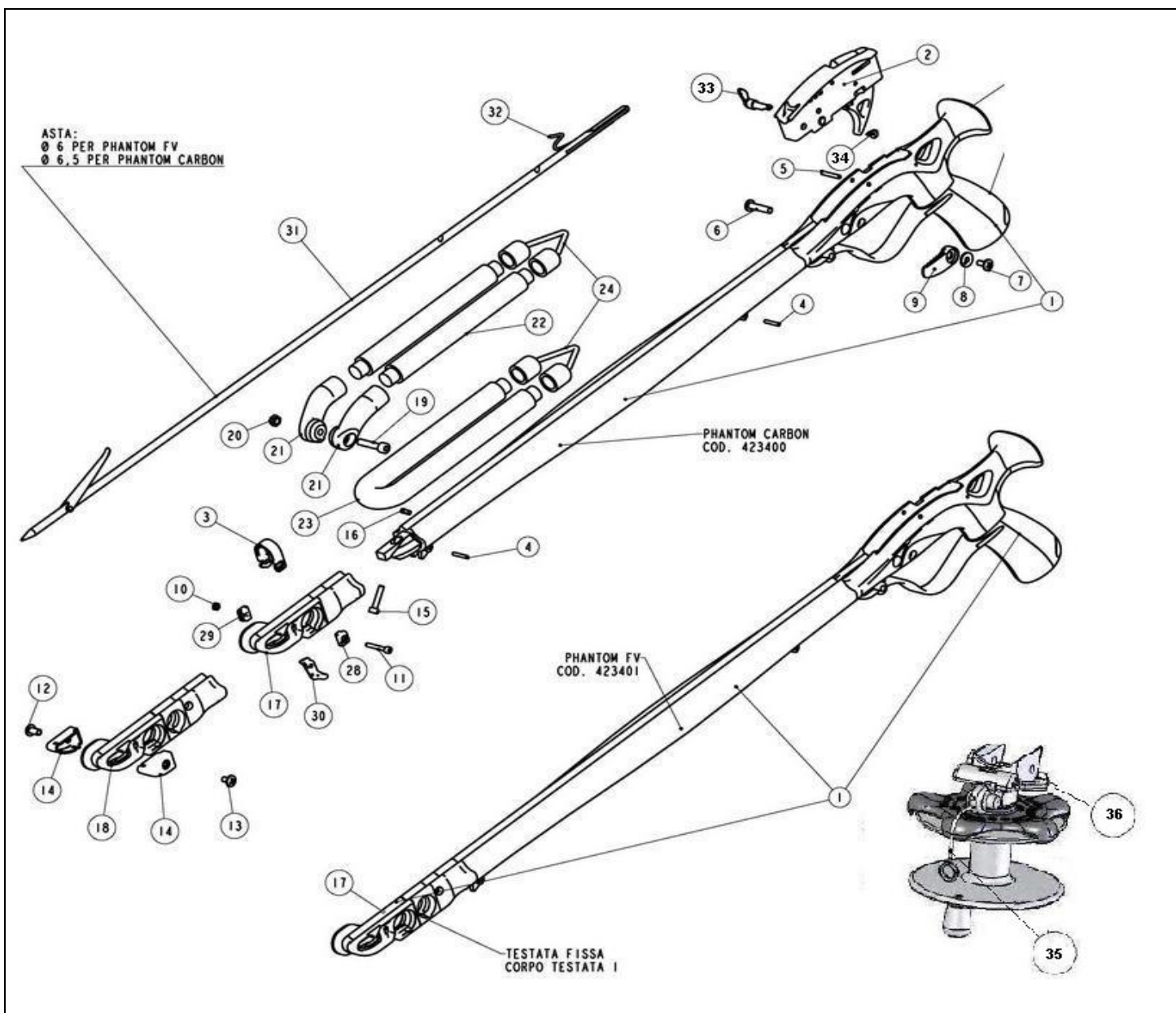


CHART NO. 509	INSTINCT SLING GUN	UPDATED : 22/01/2007
---------------	--------------------	----------------------

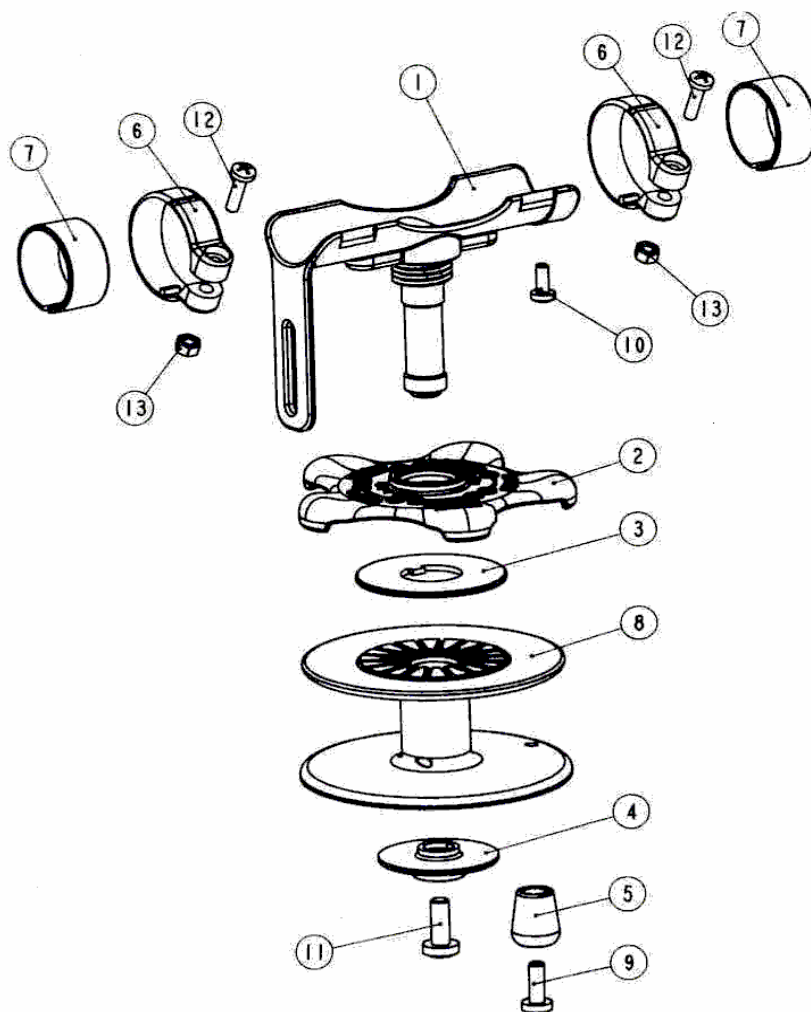
REF	CODE	DESCRIPTION	REF	CODE	DESCRIPTION
2	43200180	SHAFT GUIDE	36	43200195	CONICAL INSERT
4	43165503	NOSECONE (one)	37	43200181	DOWEL
4	43165505	ARTICULATED NOSE CONE	39	X X X	
5	43200171	SCREW	40	43165034	LINE RETAINER
6	43200220	HEAD UPPER PART	41	45111001	SCREW 9 X 13
8	43200194	O-RING SEAT	42	X X X	
9	43200169	OR 4075	43		
11	43200223	PIN D4 L24 LNG	44	43200192	LINE RELEASE
12	43200188	LOADING SUPPORT	45	47158713	NSERT M4
13	43200187	REAR SUPPORT (one)	46	X X X	
15	43200179	LINE RETAINER	47	X X X	
16	43200170	OR 6 X 1	49	X X X	
17	43200186	HANDLE COVER	50	X X X	
18	43200184	HANDLE	52	X X X	
20	43200189	SAFETY RIGHT	53	43200177	NUT INOX M5
21	43200190	SAFETY LEFT	55	43200178	WASHER
22	X X X		56	43200312	METAL BRIDGE
23	X X X				ASSEMBLIES
25	43200222	RING NUT SLING	A	43200253	HANDLE ASSY
26	X X X				(C-8-9-11-12-13-17-18-20-21-36-41-44-45)
28	X X X		B	43200254	HEAD ASSY
30	43200183	GUIDE LINE			(6-8-9-25-30-31-35-36-47-53)
31	43200173	SCREW 5 X 30	C	43200252	TRIGGER MECHANISM ASSY
34	43163968	RUBBER RING			(39-42-43-46-47-49-50-52)
35	43200221	HEAD LOWER PART			



REF	CODE	DESCRIPTION
5	43200395	PIN TRIGGER
15+16	43200398	SET SCREW CARBON HEAD
4	43200399	METAL PIN GUIDE LINE
18	43200400	CARBON HEAD DOUBLE SLINGS
17	43200405	CARBON HEAD SLING
36	43200401	BRACKET, PHANTOM REEL

REF	CODE	DESCRIPTION
35	43200402	GUIDE LINE
6+7+8+9	43200403	KIT LINE RETAINER
33+ 34	43200404	LINE RELEASE
3-10-11-28-29-30	43200397	KIT HEAD BRIDGE
2	43200396	TRIGGER MECHANISM ASSY

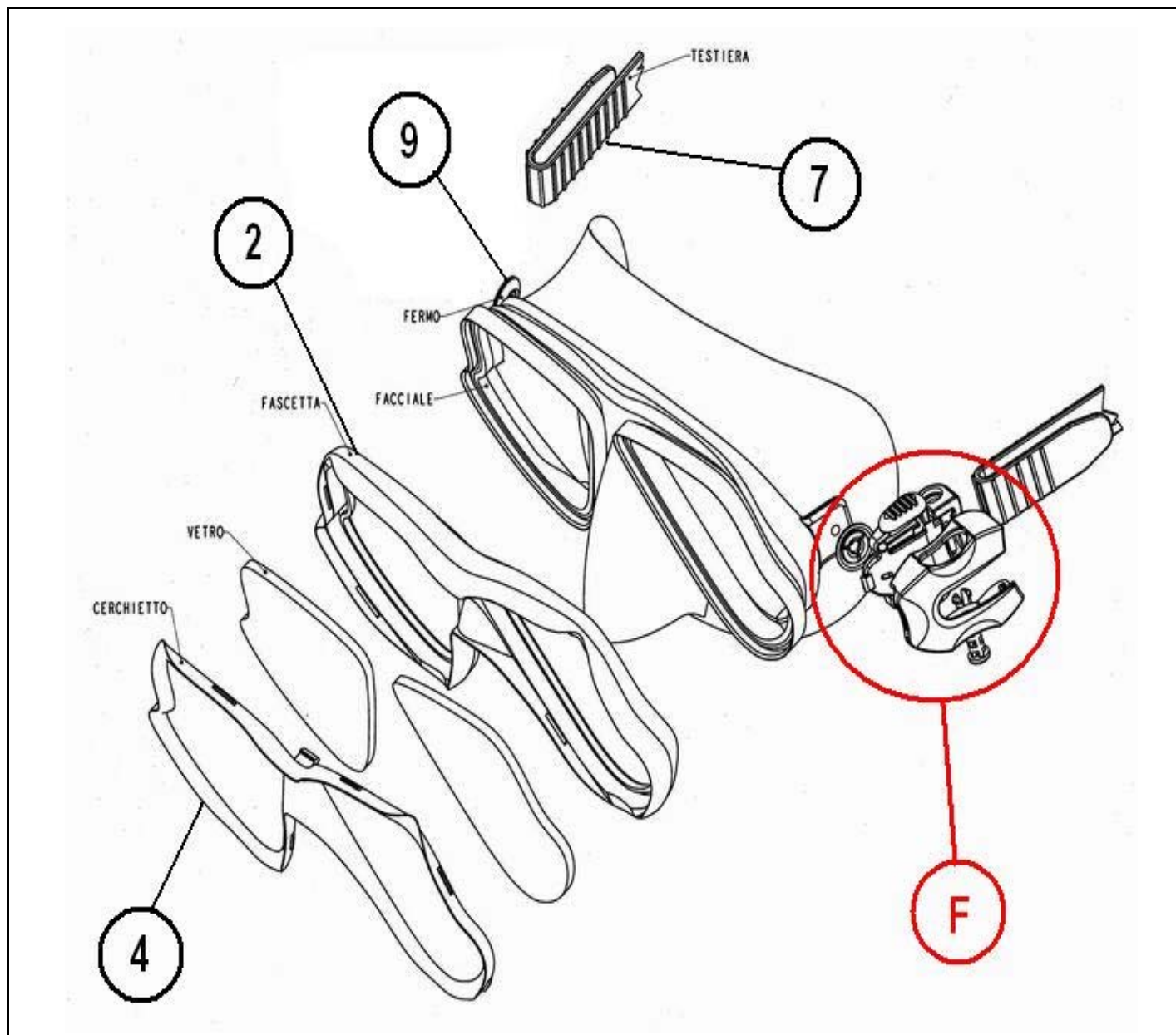




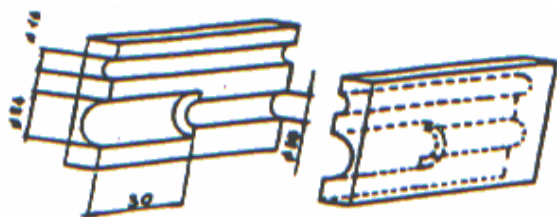
REF	CODE	DESCRIPTION	REF	CODE	DESCRIPTION
1	43200196	BRACKET	8	43200203	REEL
2	43200197	FRICTION CLUTCH	9	43200174	SCREW INOX 5X14
3	43200198	CLUTCH WASHER	10	43200175	SCREW INOX 4X10
4	43200199	STOP WASHER	11	43200172	SCREW INOX 6X16
5	43200200	KNOB	12	43200176	SCREW INOX 4X16
6	43200201	CLAMP RING	13	43165481	NUT INOX M4
7	43200202	SPACER RING	###	423854	REEL ORIZONTAL INSTINCT



MASKS	CHART N° 702	STAR LIQUID	STAR	STAR ELITE	SAMURAI
	Code	421400	421012	421013	421003
BUCKLE ASSY SAMURAI	41200204				F
BUCKLE KIT L. SKIN BK	41200382	F			
MASK STRAP, X-SERIES BK	41200136		7	7	
MASK STRAP, L. SKIN BK	41200381	7			
Lens rim Star Liquid BK	41200340	4			
Frame Star Liquid BK	41200377	2	2	2	
Disk, Buckle 'X' MASKS black	41200140	9	9	9	



Head/barrel clamp jaws



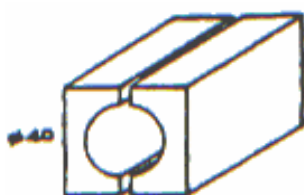
(A-1)  
Code 43106101

O Ring fitting cone  
(connecting plunger STEN - CYRANO)



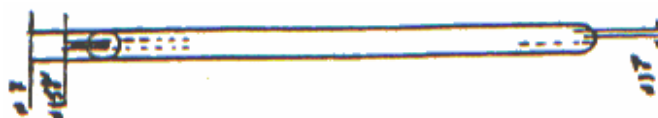
(A-12)  
Code 43106112

Tank clamp jaws



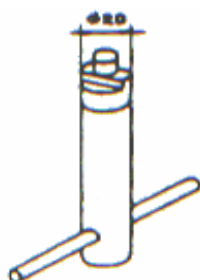
(A-3)  
Code 43106103

Connecting plunger positioning rod



(A-13)  
Code 43106113

Valve disassembling wrench



(A-4)  
Code 43106104

Piston body



(A-16)  
Code 43163608  
Code 43164209

Plastic insert tool, barrel  
CYRANO



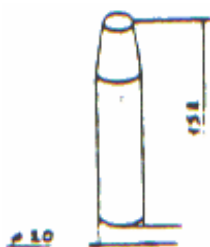
(A-7)  
Code 43106107

Handle assembling tool



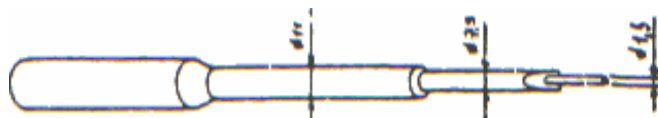
(A-18)  
Code 43106118

O Ring assembling cone



(A-9)  
Code 43106109

Plunger grub screw



(A-22)  
Code 43106122

<b>CHART NO. 642</b>	<b>ACCESSORIES</b>
<b>CODE</b>	<b>DESCRIPTION</b>
	<b>Nemo Apneist</b>
44200603	BATTERY LOCK KIT - NEMO (5 PCS)
44200681	WRIST STRAP KIT
44200691	GASKET KIT (5 PCS)
44200494	BATTERY COVER SCREWS KIT (20 PCS)
44200496	BATTERY Nemo 2430
44200684	EXTENSION STRAP ASSY - EXCEL
44200683	WRIST STRAP SCREWS KIT
414901	PROTECTION
	<b>Speargun</b>
43163351	SHAFT TANG D. 8
43164278	SHAFT TANG D. 9
423901	AIR INJECTOR